

IDEAL

Tammy's Family™



TAKE THIS CHECKLIST WITH YOU
WHEN YOU SHOP FOR CARDED CLOTHES FOR MOM
AND PEPPER

MOM CLOTHES ON CARD

=9415-1	NIGHTY NITE	\$1.00
=9417-7	HIDDEN GLAMOR	\$1.50
=9418-5	LAZY DAYS	\$1.50
=9419-3	SHOPPING TOPPING	\$1.50
=9421-9	EVENING IN PARIS	\$2.00
=9422-7	LOUNGING LUXURY	\$2.00

PEPPER CLOTHES ON CARD

=9401-1	NYLON UNDIES	\$1.00
=9403-7	BED TIME	\$1.20
=9404-5	CLASS-ROOM CAPER	\$1.20
=9406-0	AFTER SCHOOL FUN	\$1.50
=9408-6	FROSTY FROLICS	\$2.00
=9409-4	PARTY TIME	\$2.00

COMPLETE PRICELIST FOR TAMMY AND HER FAMILY DOLLS

=9000-1	TAMMY DOLL WITH STAND IN ASSORTED HAIR COLORS DRESSED IN BLUE AND WHITE PLAYSUIT. 12" TALL	\$3.00
=9400-3	PEPPER DOLL WITH ROOTED HAIR IN ASSORTED COLORS IN CHECKED PLAYSUIT. 9" TALL	\$2.80
=9450-8	TED DOLL WITH STAND DRESSED IN SHORTS AND T SHIRT. 12½" TALL	\$3.50
=9395-5	MOM DOLL WITH STAND IN ASSORTED ROOTED HAIR COLORS DRESSED IN ONE PIECE SHEATH DRESS. 12½" TALL	\$4.00
=9396-3	DAD DOLL WITH STAND DRESSED IN SLACKS AND SPORT SHIRT. 12½" TALL	\$4.00

**TAKE THIS CHECKLIST WITH YOU
WHEN YOU SHOP FOR TAMMY'S CLOTHES ON CARD**

=9220-5	SHEATH SKIRT	\$.80
=9221-3	PLEATED PLAID SKIRT	\$.80
=9222-1	SLEEVELESS BLOUSE	\$.80
=9223-9	SLACKS	\$.80
=9224-7	PEDAL PUSHERS	\$.80
=9230-4	FULL SKIRT	\$1.00
=9231-2	SHORT SLEEVED BLOUSE	\$1.00
=9232-0	LONG SLEEVED BLOUSE	\$1.00
=9233-8	PLAID JUMPER	\$1.00
=9234-6	SLEEVELESS SWEATER	\$1.00
=9240-3	HOUSE COAT	\$1.20
=9241-1	SLEEVELESS SHIRTWAIST DRESS	\$1.20
=9242-9	SHORTY NIGHTGOWN	\$1.20
=9243-7	SHEATH DRESS	\$1.20
=9244-5	HEAVY WOOLEN SWEATER	\$1.20
=9245-2	AFTERNOON DRESS	\$1.20

TED'S AND DAD'S CLOTHES ON CARD

=9451-6	BROAD CLOTH SHIRT ASSORTED COLORS	\$1.00
=9452-4	SLACKS, ASSORTED COLORS	\$1.00
=9453-2	BERMUDA SHORTS AND HIGH SOCKS	\$1.00
=9456-5	PAJAMAS AND SLIPPERS	\$1.20
=9457-3	BATHROBE AND SLIPPERS	\$1.20
=9458-1	PULL-OVER SWEATER	\$1.20
=9461-5	BLAZER JACKET	\$1.50
=9462-3	CARDIGAN SWEATER AND MATCHING HIGH SOCKS	\$1.50
=9463-1	SPORTS VEST, TIE AND SHOES	\$1.50
=9466-4	SWEATER AND SLACK OUTFIT	\$2.00
=9467-2	SPORTS CAR COAT AND CAP	\$2.00
=9468-0	TWO-BUTTONED SUIT, JACKET AND TROUSERS AND SHOES	\$2.00

TAKE THIS CHECKLIST WITH YOU
WHEN YOU SHOP FOR TAMMY'S AND HER
FAMILY'S CLOTHES

BOXED OUTFITS FOR TAMMY

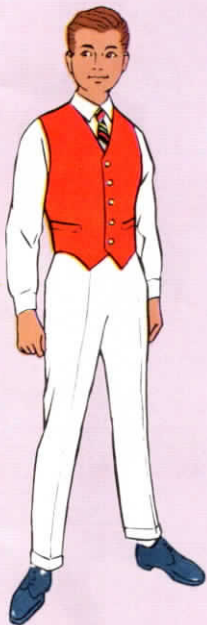
#9091-0	UNDERWEAR OUTFIT	\$2.00
#9092-8	SLEEPYTIME	\$2.00
#9093-6	FUN IN THE SUN	\$2.00
#9094-4	KNIT KNACK	\$2.00
#9111-6	PUDDLE JUMPER	\$2.50
#9113-2	TENNIS THE MENACE	\$2.50
#9114-0	WALKING HER PET	\$2.50
#9115-7	PIZZA PARTY	\$2.50
#9117-3	BEAU AND ARROW	\$2.50
#9118-1	TEE TIME	\$2.50
#9119-9	PURL ONE	\$2.50
#9131-4	CHEERLEADER	\$3.00
#9132-2	CUTIE CO-ED	\$3.00
#9133-0	SCHOOL DAZE	\$3.00
#9134-8	PICNIC PARTY	\$3.00
#9135-5	SWEATER GIRL	\$3.00
#9152-0	RING-A-DING	\$3.50
#9153-8	DREAM BOAT	\$3.50
#9172-8	TRAVEL ALONG	\$4.00
#9173-6	MODEL MISS	\$4.00
#9174-4	SORORITY SWEETHEART	\$4.00
#9175-1	CHECKMATE	\$4.00
#9176-9	FUR 'N FORMAL	\$4.00
#9177-7	SKATE DATE	\$4.00
#9211-4	SNOW BUNNY	\$5.00
#9212-2	FIGURE 8	\$5.00



TED AND DAD
SPORTS CAR COAT AND CAP
(#9467-2) \$2.00



TED AND DAD
TWO-BUTTONED SUIT, JACKET AND
TROUSERS AND SHOES (#9468-0)
\$2.00



TED AND DAD
SPORTS VEST, TIE AND SHOES
(#9463-1) \$1.50



TED AND DAD
SWEATER AND SLACK OUTFIT
(#9466-4) \$2.00



TED AND DAD
BLAZER JACKET (#9461-5)
\$1.50



TED AND DAD
CARDIGAN SWEATER AND MATCH-
ING HIGH SOCKS (#9462-3)
\$1.50



TED AND DAD
BATHROBE AND SLIPPERS
(#9457-3) \$1.20



TED AND DAD
PULL-OVER SWEATER (#9458-1)
\$1.20



TED AND DAD
BERMUDA SHORTS AND HIGH
SOCKS (≅9453-2) \$1.00



TED AND DAD
PAJAMAS AND SLIPPERS
(≅9456-5) \$1.20



TED AND DAD
BROAD CLOTH SHIRTS (#9451-6)
ASSORTED COLORS. \$1.00



TED AND DAD
SLACKS (#9452-4)
ASSORTED COLORS. \$1.00



FROSTY FROLICS (#9408-6)

This flannel winter coat with simulated fur collar and headband keep darling little Pepper warm for winter fun. Style leaflet. Complete set (without doll) \$2.00



PARTY TIME (#9409-4)

Pepper goes to her first party in this flouncy nylon and velvet dress trimmed with pearls. She has a lovely bag to match. Style leaflet. Complete set (without doll) \$2.00



CLASS-ROOM CAPER (#9404-5)

Her sleeveless school dress with flared skirt and embroidered waistband make Pepper the most popular girl in class. Lace trimmed panties. Style leaflet. Complete set (without doll) \$1.20



AFTER SCHOOL FUN (#9406-0)

Her knitted wool sweater and elastic topped slack outfit is great for Pepper's visits with friends. Style leaflet. Complete set (without doll) \$1.50



NYLON UNDIES (#9401-1)

Pepper's nylon petticoat and panties are trimmed with lace. Style leaflet.

Complete set (without doll) \$1.00



BED TIME (#9403-7)

Drowsy little Pepper is adorable and snug in her flannel two-piece pajama set. Slippers. Style leaflet.

Complete set (without doll) \$1.20



EVENING IN PARIS (#9421-9)

Mom goes out formal with Dad in this strapless gold brocade sheath. A black velvet stole and necklace crown her beauty. Style leaflet and gold pouch included.

Complete set (without doll) \$2.00



LOUNGING LUXURY (#9422-7)

Mother dazzles while relaxing in this luxurious lounging outfit with its short sleeved top, enhanced with gold buttons, and rayon brocade pants. Wedgies, hanger and Style leaflet included.

Complete set (without doll) \$2.00



LAZY DAYS (#9418-5)

This fleecy brunch coat keeps Mom comfy and cozy during restful hours at home. Style leaflet.

Complete set (without doll) \$1.50



SHOPPING TOPPING (#9419-3)

For afternoons downtown Mom wears this sleeveless dress with sheath skirt and gay patterned top. This dress features a large shoulder collar. Style leaflet.

Complete set (without doll) \$1.50



NIGHTY NITE (#9415-1)

Mom wears a nightgown trimmed with lace and flowers made of dainty printed lawn. Style leaflet and wedgies included. Complete set (without doll) \$1.00



HIDDEN GLAMOR (#9417-7)

Mom wears black lace lingerie consisting of bra, panty, and half slip made of lace with embroidered flower trimming. Style leaflet. Complete set (without doll) \$1.50



HEAVY WOOLEN SWEATER
(=9244-5)

Assorted colors. For winter fun Tammy loves her wooly warm sweater. Comes with scarf, hanger and Style book.
Complete set (without doll) \$1.20



AFTERNOON DRESS (=9245-2)

This sleeveless dress, decorated with flowers and ribbons, sends Tammy out singing on afternoon dates. Shoes, hanger and Style book included.
Complete set (without doll) \$1.20



SHORTY NIGHTGOWN (#9242-9)

Assorted colors. Tammy goes to bed in style in this lace trimmed nighty. She's fortified with a fruit snack. Wedgies, hanger and Style book included.

Complete set (without doll) \$1.20



SHEATH DRESS (#9243-7)

Assorted colors. A stunning low cut sheath for going out with that important boy. Belt, shoes, hanger and Style book included.

Complete set (without doll) \$1.20



HOUSE COAT (#9240-3)

This comfy, roomy gingham checked house coat has its own Princess phone and telephone directory. They are both great for Tammy's hours gossiping with friends. Hanger and Style book included.

Complete set (without doll) \$1.20



SLEEVELESS SHIRTWAIST DRESS (#9241-1)

Assorted colors. A beautifully tailored shirtwaist dress with tailored yoke decorated with gold buttons. This stylish dress comes with black and gold belts for different occasions. Hanger and Style book included.

Complete set (without doll) \$1.20



PLAID JUMPER (#9233-8)

Tammy is terrific in this smart plaid, beautifully tailored with two pockets. Pocketbook, shoes, hanger and Style book complete the set.

Complete set (without doll) \$1.00



SLEEVELESS SWEATER

(#9234-6)

A thick, warm fleecy sweater that comes in assorted spring colors. Thick rimmed spectacles, hanger and Style book included.

Complete set (without doll) \$1.00



SHORT SLEEVED BLOUSE
(#9231-2)

This man tailored blouse has gold buttons, and comes with thick-framed eye glasses, hanger and Style book.

Complete set (without doll) \$1.00



LONG SLEEVED BLOUSE
(#9232-0)

Comes in gay candy stripes set off by black buttons. Purse, hanger and Style book included.

Complete set (without doll) \$1.00



PEDAL PUSHERS (#9224-7)

Assorted colors. Comes with glass of orange juice, Weekly News, hanger and Style book.
Complete set (without doll) \$.80



FULL SKIRT (#9230-4)

Assorted colors. Each of these lovely flared skirts comes with its own heart shaped pendant. Two pockets and hem are fringed. Hanger and Style book included.
Complete set (without doll) \$1.00



SLEEVELESS BLOUSE (#9222-1)

Dainty flowered pattern with pearl decorations. Goes well with a variety of skirts. Comes with pearl bracelet, hanger and Style book.

Complete set (without doll) \$.80



SLACKS (#9223-9)

Tammy loves these comfortable slacks for all informal occasions. Comes with wedgies, hanger and Style book.

Complete set (without doll) \$.80



SHEATH SKIRT (=9220-5)

Assorted colors. Comes with its own gold belt and date book. Hanger and Style book included. Complete set (without doll) \$.80



PLEATED PLAID SKIRT (=9221-3)

Gay plaid, with safety pin closure. Matching shoes, clothes hanger and Style book. Complete set (without doll) \$.80



SNOW BUNNY (#9211-4)

Tammy skis down the slopes in her fabulous ski outfit. Her bright red wool jacket has white fur trimmed hood and cuffs. Her black jersey pants are tucked into white topped boots. She balances on her skis with colorful poles which she clutches with furry white mittens. Style book.

Complete set (without doll) \$5.00



FIGURE 8 (#9212-2)

Tammy cuts a fine figure on the ice. Her ice skating outfit is made of wool pants with a white knitted jacket with gold buttons. She sports a gaily knitted woolen scarf and hat with pompoms. Scandinavian type gloves keep her hands snug and warm. Ice skates, shoes and carrying strap included. Style book.

Complete set (without doll) \$5.00



FUR 'N FORMAL (#9176-9)

Tammy dazzles the class at the Junior Prom in her evening gown of gold metallic brocade. A gorgeous stole, pearl necklace, pearl bracelet, long white gloves and gold bag add to her glamor. Her hair is crowned with a flowered headband. Nylon hose and matching red shoes. Style book.

Complete set (without doll) \$4.00



SKATE DATE (#9177-7)

Tammy is tops in fashion in her skating dress of gold brocade and velvet flared skirt. She has stretch panties and full length nylons. A gold headband holds her hair in place while skating. Roller skates and shoes included. She totes her gear in a spacious plastic skating bag. Style book.

Complete set (without doll) \$4.00



SORORITY SWEETHEART (#9174-4)

Tammy has her sorority emblem on the white wool jerkin that she wears over a mix and match outfit of long sleeved checked cotton blouse and blue wool pleated skirt. Her outfit is complete with nylon stockings, red ribbon and red heeled pumps.

Eye glasses, phone directory and Style book.

Complete set (without doll) \$4.00

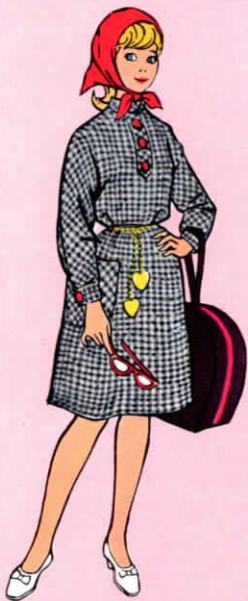


CHECKMATE (#9175-1)

Tammy will look lovely in her three-piece outfit of red checked blouse, white pleated skirt and blue wool blazer jacket. With her camera she'll snap pictures of her friends.

Her accessories include a shoulder bag, pearl necklace, hair bow, nylon stockings and Weekly News. White shoes and Style book.

Complete set (without doll) \$4.00



TRAVEL ALONG (#9172-8)

Tammy wears a cotton checked shift with hip-slung chain belt, perky red kerchief, nylon stockings and white flat heeled pumps. Tammy has thick-framed eye glasses. Her travelling companions include a vinyl shoulder bag, Weekly News, and chic hat box. Style book.

Complete set (without doll) \$4.00



MODEL MISS (#9173-6)

Tammy has a part time modeling job! She'll scoop up her chic pocket book, pearl bracelet, and dash out with her model's hat box flying.

She's wearing her trapeze-style wool lined coat. Her perky blue cap is decorated with pompoms. Red shoes, Date book, Nylon stockings and Style book.

Complete set (without doll) \$4.00



RING-A-DING (#9152-0)

Tammy relaxes with her Princess phone in her adorable ruffled overblouse, black velvet pants and comfortable wedgies. She has her phone book handy. She's prepared a plate full of fruit to keep her well fed until dinner time. Wait till Dad sees the phone bill! TV set. Style book.

Complete set (without doll) \$3.50



DREAM BOAT (#9153-8)

It's date night and Tammy's going to a party. Her beau will be proud to escort this vision in blue satin and brocade with removable embossed silk jacket. Her pretty flowered headband and dainty shoes will make Tammy look like the queen of the ball. She has a gold purse, date book and camera. Style book. Complete set (without doll) \$3.50



PICNIC PARTY (#9134-8)

Tammy and her boy friend are going to a picnic. Tammy's wearing a striped knit shirt, clam digger pants, sneakers, sunglasses and headband. She'll let her beau carry the picnic basket and tablecloth. Tammy will carry the transistor radio in its carrying case. Style book.

Complete set (without doll) \$3.00



SWEATER GIRL (#9135-5)

A birthday gift from Dad is Tammy's red cardigan sweater with push-up sleeves. She wears it over a gray sheath skirt. Her elegant two-strand necklace matches the pearl buttons on her sweater.

Mom's present is a camera and purse. Eye glasses, Date book and Style book.

Complete set (without doll) \$3.00



CUTIE CO-ED (#9132-2)

Tammy strolls across the campus in her blue corduroy jumper, red blouse and flame red leotards. She totes her roomy red carry-all bag and listens to her favorite disc jockeys on her transistor radio with carrying case. She loves wearing her gold heart on a long gold chain. Red sneakers. Style book.

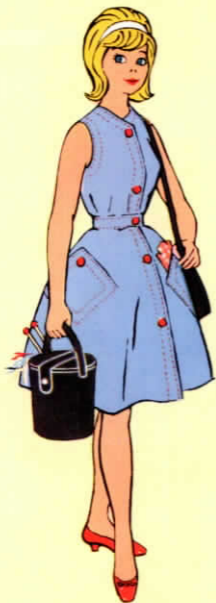
Complete set (without doll) \$3.00



SCHOOL DAZE (#9133-0)

In school Tammy wears a dress with a red ribbed top and full plaid skirt and gold belt. She does her homework on her typewriter, but waits for her boy friend's call on her Princess phone. Tammy carries her zippered red portfolio. Red shoes and phone book. Style book.

Complete set (without doll) \$3.00



PURL ONE (#9119-9)

This tailored sleeveless shirtwaist dress with button down front is perfect for Tammy who loves to socialize while knitting. Red and black shoulder bag, checked hanky, knitting bag with wool, 2 knitting needles and matching shoes complete this outfit. Style book. Complete set (without doll) \$2.50



CHEERLEADER OUTFIT (#9131-4)

Tammy leads the school cheers with her megaphone. She's wearing a bulky white sweater with letter T, short red flared felt skirt and matching cap with chin strap. Tammy wears high socks with her white sneakers. She twirls her baton as the stadium roars. Style book. Complete set (without doll) \$3.00



BEAU AND ARROW (#9117-3)

Tammy has just learned to shoot her bow and arrow. On the archery range she wears a red and white knit shirt with attached hood and dungarees. She's still hoping to hit the bullseye.

White sneakers. Style book. Complete set (without doll) \$2.50



TEE TIME (#9118-1)

Tammy scores a hole in one as soon as she reaches the first tee in her perky aqua panty-blouse and golf skirt. She has a sun hat and golf belt with three tees. Her caddy carries her plastic golf bag.

Sneakers and score card included. Style book.

Complete set (without doll) \$2.50



WALKING HER PET (≅9114-0)

Dressed in a fashionable leatherette skirt with wool plaid top and contrasting sheer red scarf, Tammy takes her pet for a walk. Her accessories are a gold heart, a red shoulder bag and shoes. Style book.

Complete set (without doll) \$2.50



PIZZA PARTY (≅9115-7)

The gang's coming over for a pizza party. Tammy will greet them in her casual outfit of hip-length harlequin top trimmed with cute black tassels and her favorite red leotards and sandals. She'll wear framed glasses as the girls pour over the Weekly News and munch delicious pizza. Style book.

Complete set (without doll) \$2.50



PUDDLE JUMPER (#9111-6)

Let it rain. Tammy can show off her chesterfield raincoat. She protects her hair with the matching scarf. She wears the cutest white boots and carries a red shoulder bag. For heavy downpours Tammy has her own umbrella. Style book.

Complete set (without doll) \$2.50



TENNIS THE MENACE (#9113-2)

Tammy hits the ball over the net wearing a bright print cotton overblouse with cord belt and yellow jamaicas, white tennis socks, tennis shoes and of course, sunglasses. Her tennis racquet even has its own press. Hair band. Style book.

Complete set (without doll) \$2.50



FUN IN THE SUN (#9093-6)

First a relaxing swim in her lovely red one-piece bathing suit and white cap. Then, out of the water, she dons her terry cloth poncho and sandals and flops onto her beach mat to enjoy the sun. Style book.

Complete set (without doll) \$2.00



KNIT KNACK (#9094-4)

Tammy's Sunday afternoon date is glamorized by her sleeveless crocheted and knitted square-necked dress. Her beau is stunned by this stylish frock with its hand-crocheted beret and matching white shoes. Style book.

Complete set (without doll) \$2.00



UNDERWEAR OUTFIT (≅9091-0)

Crisp nylon sheer petticoat lace trimmed matching panties and bra, comb, brush, vanity mirror and sandals. Style book.

Complete set (without doll) \$2.00



SLEEPYTIME (≅9092-8)

Tammy prepares for bed wearing her checked lace-trimmed pajama tops, pantaloen bottoms and comfortable slippers. First she must set her hair with comb and curlers. Now she is ready to have a glass of milk before going to bed. Style book.

Complete set (without doll) \$2.00

TAMMY DOLL (≅9000-1)

She's 12" high and created in the perfect image of today's teenager from the top of her hair down to her white sneakers. Made of sturdy plastic, her arms, legs and head are movable. Tammy wears a white trimmed blue cotton playsuit and white sneakers. Tammy's own Style book pictures all the lovely outfits and accessories that make up her exciting wardrobe. \$3.00

TED DOLL (≅9450-8)

Tammy's teen age brother, Ted, is a handsome 12½" all plastic doll with movable arms, legs and head. He's dressed in T shirt and shorts. He and Tammy are style leaders in the high school set. Style book and stand. \$3.50

PEPPER DOLL (≅9400-3)

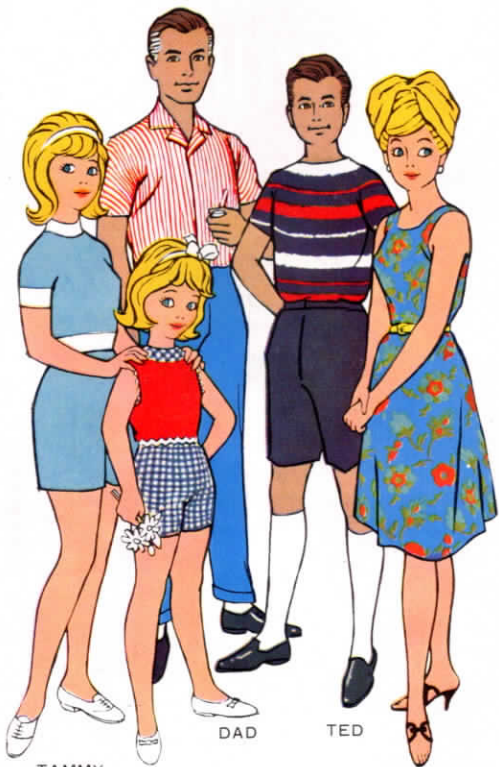
Everyone adores Tammy's little sister Pepper. 9½" high of sturdy plastic, with charming Saran hairdo, Pepper is so easy to dress and to love. She's wearing a playsuit and plastic shoes, and she comes with a Style book. \$2.80

MOM DOLL (≅9395-5)

Tammy's lovely mother is 12½" high. She's made of sturdy plastic with movable arms, legs and head. Dressed in a high necked sheath, Mom is the ideal of every girl and a glamorous companion to Dad. Her rooted Saran hair is coiffured in the latest fashion and colors. Style book and doll stand included. \$4.00

DAD DOLL (≅9396-3)

The head of Tammy's family is this beautifully sculptured 12½" high all plastic doll. He comes dressed in a bright sport shirt and slacks. Like most Dads he shares his smartly styled wardrobe with his teen age son Ted. Style book and stand. \$4.00



TAMMY

PEPPER

DAD

TED

MOM

IDEAL

tammy™

THE DOLL YOU LOVE...TO DRESS

